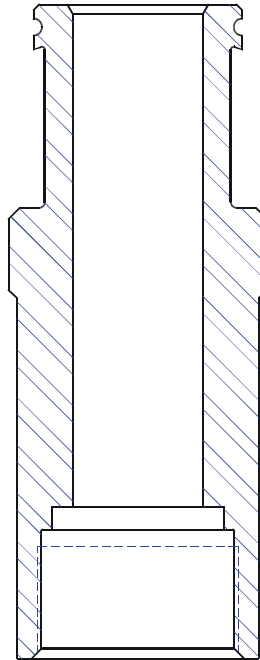




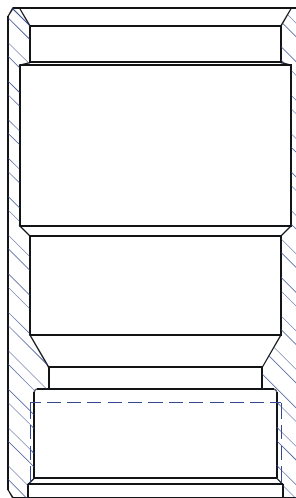
## Packer Nose & Fishing Necks

A free pump requires a packer nose attached to the top of the pump to provide a seal against the tubing during pump installation and retrieval. The standard packer nose consists of two elastomer packer cups and check valve to control fluid flow as well as a standard wireline fishing neck.

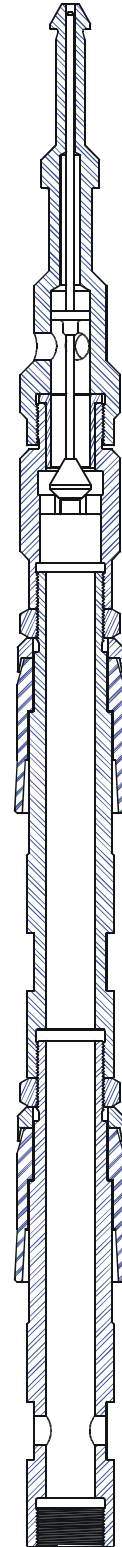
Fishing Necks are required for pumps landed inside Sliding Sleeve Doors, High-volume bottom hole Assemblies set up for reverse circulation and pumps set up with tubing packoffs. These fishing necks can be internally or externally retrieved with standard wireline tools



**External Fishing Neck**



**Internal Fishing Neck**



**Packer Nose**